

CIFAMIX 100-120

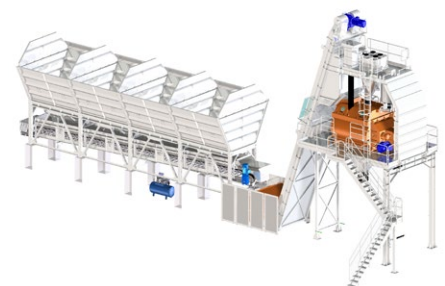


Technical data

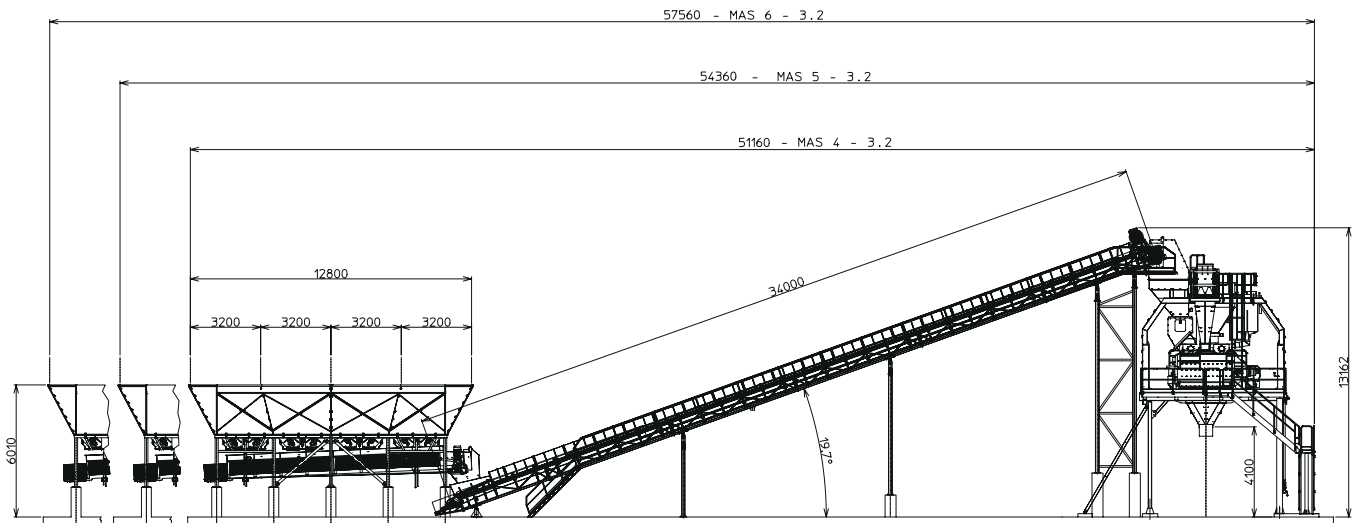
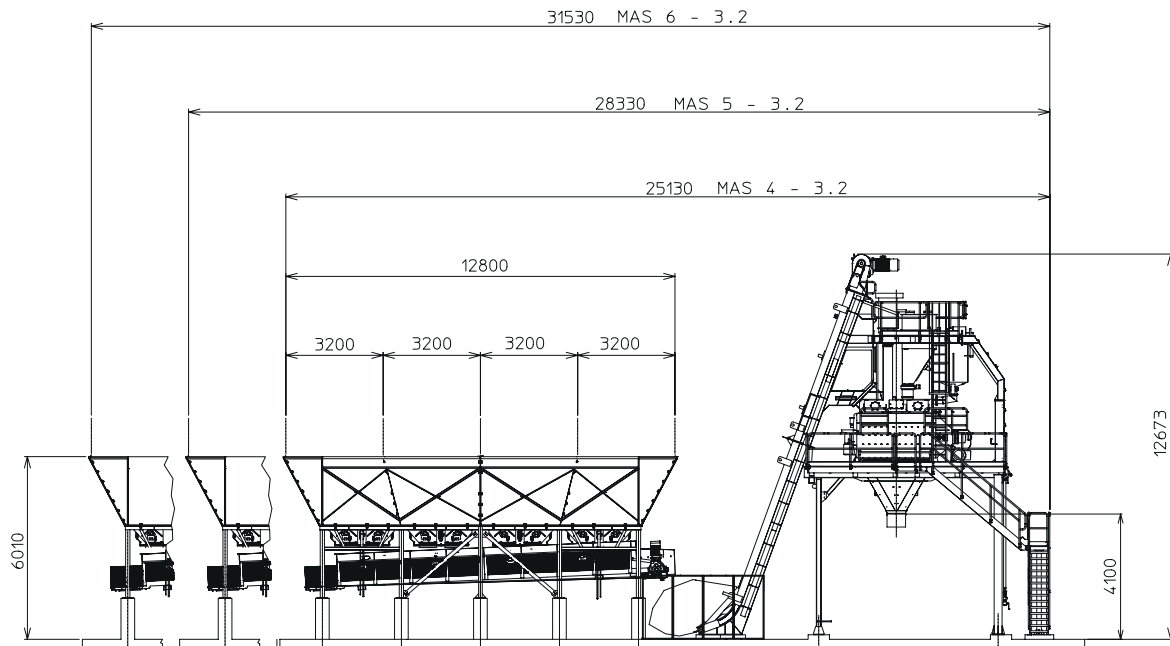
CIFAMIX 100-120

SPECIFICATIONS

Mixer model and type	DNA 2.25 - DNA 3.0
Mixer output (m ³ /cycle)	2.25 - 3.0
Plant output (m ³ /h)	100 - 120
Aggregate storage capacity (m ³)	104/130/156
Aggregate compartments (n)	4 / 5 / 6
Cement silos (n)	up to 6
Mixer feeding system	skip or inclined belt
Automation system	CIFAWIN
Water dosing system (l)	1050 by weight
Cement dosing system (kg)	1960 by weight
Additive dosing system (l)	24 + 24 by weight
Aggregate loading system	1 ramp
Aggregate dosing	by weight (belt)
Control cabin	external



CIFAMIX 100-120



Standard equipment

- DNA 2.25 (CIFAMIX 120) or DNA 3.0 (CIFAMIX 120) helicoidal twin shaft mixer
- Aggregate containing walls storage capacity 104/130/156 m³
- Mixer de-dusting system
- Electric board

Main options

- Moisture probes (micro-wave or capacitive type)
- Mixer washing system
- On-ground cement silos
- Additive dosing system
- Control cabin
- Microsilica weighing hopper
- Ice weighing hopper
- CIFAWIN automation system

Technical data and characteristics subject to modifications without notice

