

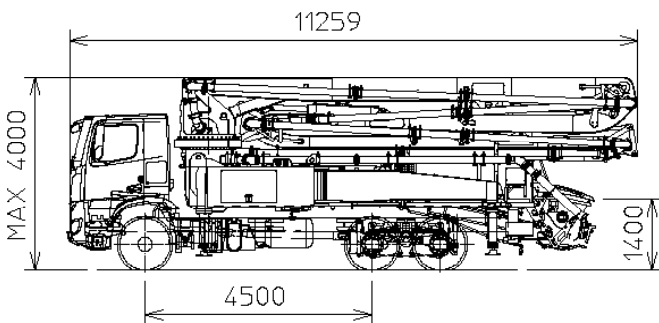
## K36L

### TRUCK-MOUNTED CONCRETE BOOM PUMP

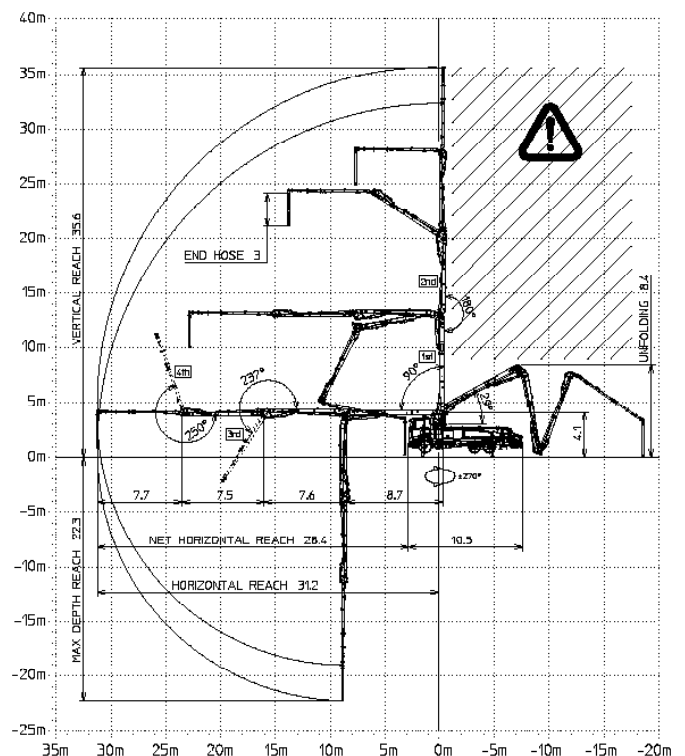
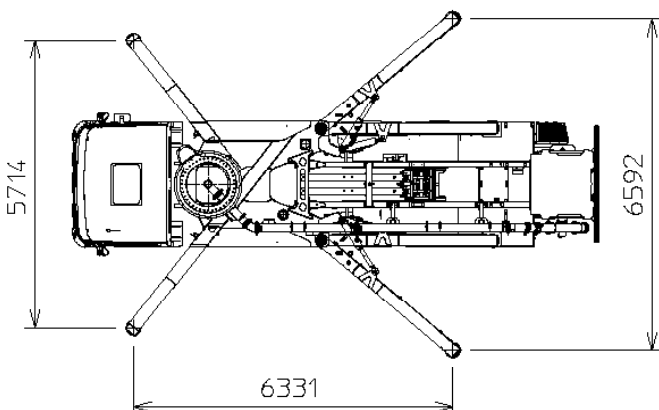
Placing boom	B4Z 36/32
Pumping unit	HP1608EC HP1606H PTO
Driven by Chassis	3-4 axles



### Dimensions



Dimensions varying according to truck assembly



## K36L

### Standard equipment

- Assembling on standard 3 axles chassis
- Self-supporting frame, torsion free, FEM designed and fatigue tested at the test bench TEC CIFA
- Articulated boom, FEM designed and and fatigue tested at the test bench TEC CIFA
- Placing boom B4Z 36/32, 4 sections, "Z" folding system
- Fully hydraulic outrigger controls on both sides of the truck
- Front "X" style diagonal outriggers with single telescopic opening and swing-out rear outriggers for a quick and easy set-up also in narrow areas
- "Load Sensing" proportional boom control for pumping unit HP-C
- "BFC" Best-Flex Cifa supporting system allowing just one man to change delivery pipeline easily, quickly and safe
- Concrete flow rate regulator
- Safety device on opening inspection hatch
- Pumping unit with closed loop (HP1608EC) or open loop (HP1606H)
- Project conforms to Directive Machinery 2006/42/CE
- 2 Proportional radio control with two boom movement speed, synthesizer for automatic frequency search, 8 position joy stick and concrete flow rate regulator. 20 mt cable
- Double thickness concrete pipes, in high resistant steel and insert carbide chrome - CIFA Long Life Pipes
- Emergency control pad for pumping unit HP-C
- Remote controlled electric vibrator placed on the concrete hopper grid
- Centralized lubrication system for pumping unit
- Automatic oil lubrication system for pumping pistons on HP-C
- Additional manual lubrication system for pumping unit
- Hard plastic outrigger support plates with relative housing
- Rear light on hopper
- Level readers for stabilization control
- Accessories for cleaning and pipes washing
- Fiber glass hopper covering
- Emergency pumping unit kit  
*(for machine with closed loop pumping unit)*

### Control system

- Smartronic Silver (available only for machine with closed loop pumping unit):
  - integrated color LCD
  - counters
  - pumping unit management
  - diagnostics
  - capsense rear panel

### Main options

- ASC - Advanced Stability Control  
*(available only for machine with closed loop pumping unit)*
- LSC - Light Stability Control  
*(available only for machine with open loop pumping unit)*
- Pneumatic concrete valve - Shut-off valve
- High pressure water pump 28l / 120 bar
- Centralized lubrication system for placing boom
- Separated emergency engine kit for independent control of the concrete pumping unit, boom and water pump

### TRUCK-MOUNTED CONCRETE BOOM PUMP

<b>Placing boom</b>	B4Z 36/32
<b>Pumping unit</b>	HP1608EC HP1606H
<b>Driven by</b>	PTO
<b>Chassis</b>	3-4 axles

### Pumping unit technical data

Model		HP1608EC	HP1606H
Max. theoretical output	<i>m³/h</i>	160	160
Max. pressure on concrete	<i>bar</i>	80	53
Conc. cylinders (diam. x stroke)	<i>mm</i>	230x2100	230x2100
Concrete hopper capacity	<i>l</i>	550	550
Hydraulic circuit		closed	open

### Placing boom technical data

Model		B4Z 36/32
Pipeline diameter	<i>mm</i>	125
Max. vertical reach	<i>m</i>	35,6
Max. horizontal distance (from center of slewing axis)	<i>m</i>	31.2
Min. unfolding height	<i>m</i>	8.4
Section numbers		4
1st section opening angle		90°
2nd section opening angle		180°
3rd section opening angle		237°
4th section opening angle		250°
Rotating angle		+/-270°
End hose length	<i>m</i>	3

*Technical data and characteristics subject to modifications without notice*

