

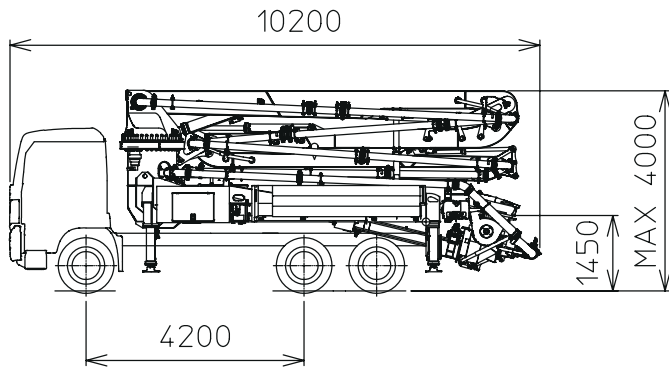
K30L

TRUCK-MOUNTED CONCRETE BOOM PUMP

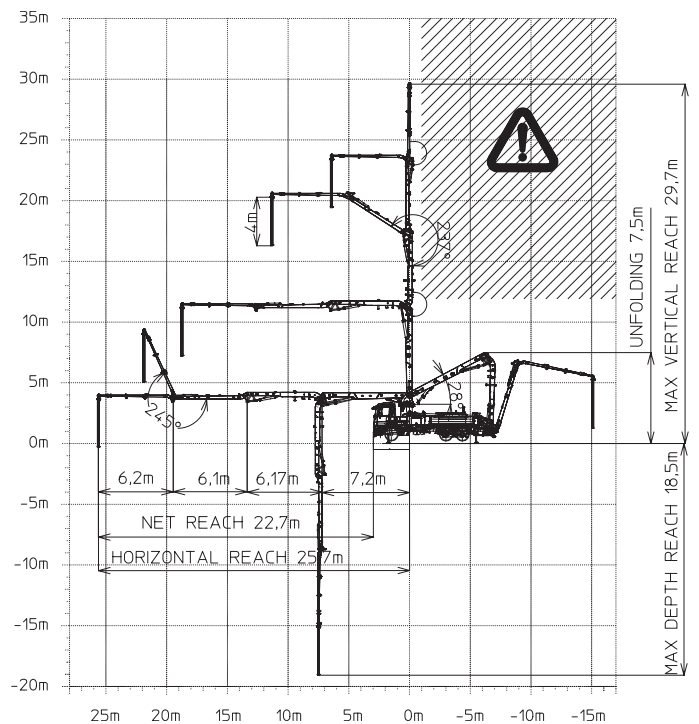
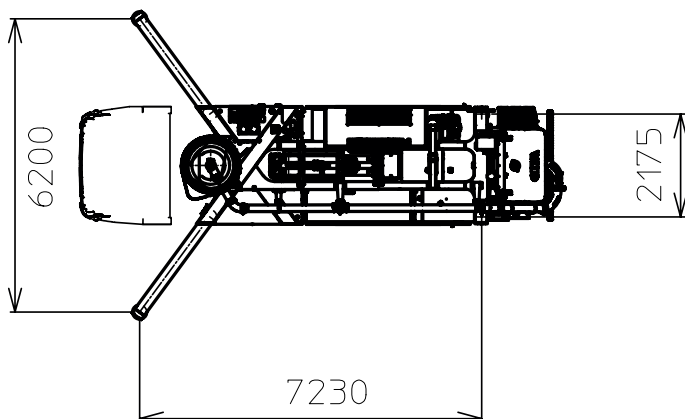
Placing boom	B4Z 30/26
Pumping unit	HPG 1408 EPC PA 1506 F8
Driven by	PTO
Chassis	3 axles



Dimensions



Dimensions varying according to truck assembly



K30L

Standard equipment

- Assembling on standard 3 axles chassis
- Self-supporting frame, torsion free, FEM designed
- Placing boom B4Z 30/26, 4 sections, 125 mm pipeline diameter, "Z" folding system
- Fully hydraulic outrigger controls on both sides of the truck
- Front outriggers "X" style for a quick set-up and easy pump placement in narrow areas
- Proportional boom control
- The "BFC" Best-Flex Cifa supporting system allowing just one man to change delivery pipeline easily, quickly and safely
- Concrete flow rate regulator
- Safety device on opening inspection hatch
- Project conforms to Directive Machinery 2006/42/CE
- 2 Proportional radio control with two boom movement speed, synthesizer for automatic frequency search, 8 position joy stick and concrete flow rate regulator. 20 mt cable
- Double thickness concrete pipes, in high resistant steel and insert carbide chrome - CIFA Long Life Pipes
- Remote controlled electric vibrator placed on the concrete hopper grid
- Hard plastic outrigger support plates with relative housing
- Rear light on hopper
- Level readers for stabilization control
- Accessories for cleaning and pipes washing
- HPG-IF pumping unit with closed circuit and reversal flow: superb performances, high pressures and output, high reliability and easy and reduced maintenance; 9 inches S valve
alternatively:
F8 pumping system with open circuit: smooth, continuous and easy pumping, combined with high reliability
- Medium pressure water pump (50l/50bar)

Control system

- Smartronic Silver (available only for machine with closed loop pumping unit):
 - integrated color LCD
 - counters
 - pumping unit management
 - diagnostics
 - capsense rear panel

Main options

- ASC - Advanced Stability Control
(available only for machine with closed loop pumping unit)
- LSC - Light Stability Control
(available only for machine with open loop pumping unit)
- Pneumatic concrete valve - Shut-off valve
- High pressure water pump (28l/120 bar)
- Centralized lubrication system for placing boom
- Separated emergency engine kit for independent control of the concrete pumping unit, boom and water pump
- Continuous boom rotation kit

TRUCK-MOUNTED CONCRETE BOOM PUMP

Placing boom	B4Z 30/26
Pumping unit	HPG 1408 EPC PA 1506 F8
Driven by	PTO
Chassis	3 axles

Pumping unit technical data

Model		HPG 1408 EPC	PA 1506 F8
Max. theoretical output	<i>m³/h</i>	140	150
Max. pressure on concrete	<i>bar</i>	80	53
Conc. cylinders (diam. x stroke)	<i>mm</i>	230x2000	230x2000
Concrete hopper capacity	<i>l</i>	600	550
Hydraulic circuit		closed	open

Placing boom technical data

Model		B4Z 30/26
Pipeline diameter	<i>mm</i>	125
Max. vertical reach	<i>m</i>	29,7
Max. horizontal distance	<i>m</i>	25,6
Min. unfolding height	<i>m</i>	7,5
Section numbers		4
1st section opening angle		90°
2nd section opening angle		180°
3rd section opening angle		237°
4th section opening angle		245°
Rotating angle		+/-270°
End hose length	<i>m</i>	4

Technical data and characteristics subject to modifications without notice

