

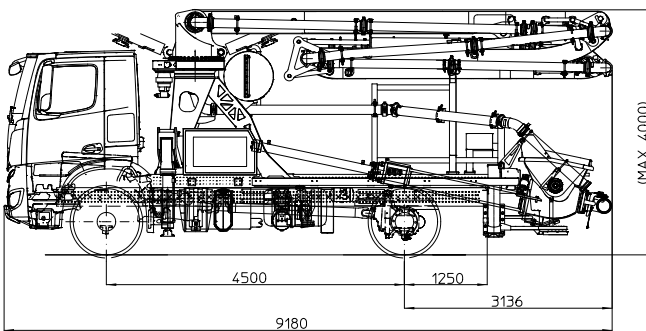
## K24L

### TRUCK-MOUNTED CONCRETE BOOM PUMP

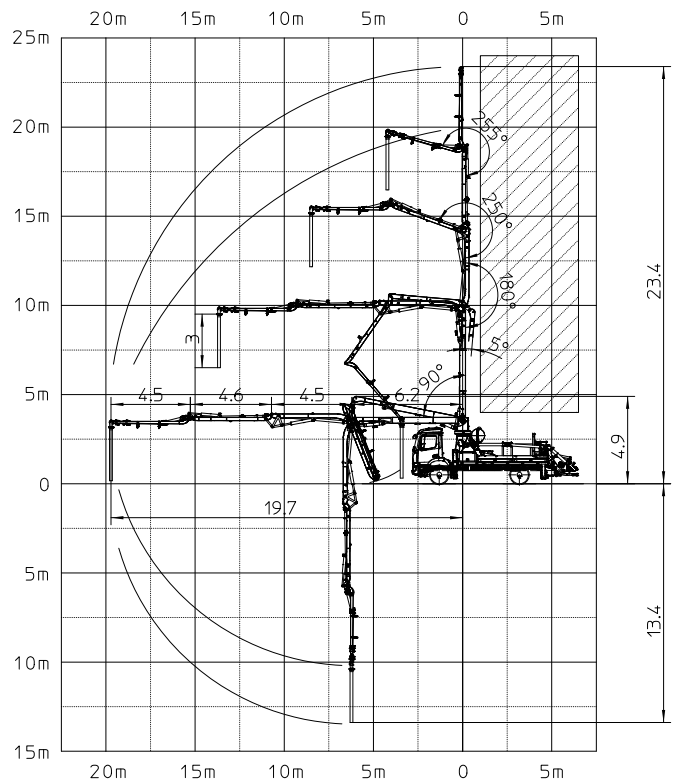
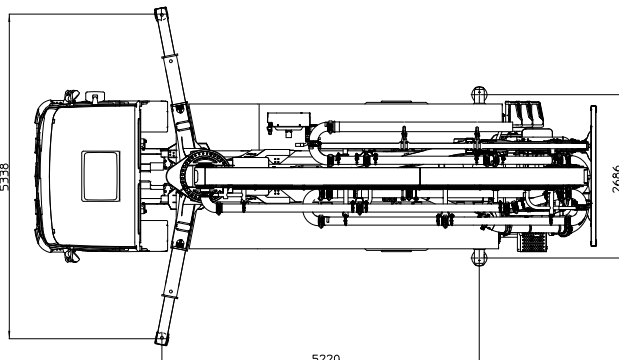
Placing boom	B4RZ 24/20
Pumping unit	HP907H HP1608EC
Driven by	PTO
Chassis	2 axles HP907H 3 axles HP1608EC



### Dimensions



Dimensions varying according to truck assembly



## K24L

### Standard equipment

- Assembling on standard 3 axles chassis
- Self-supporting frame, torsion free, FEM designed
- Placing boom B4RZ 30/26, 4 sections, 125 mm pipeline diameter, "RZ" folding system
- Fully hydraulic outrigger controls on both sides of the truck
- Front outriggers "X" style for a quick set-up and easy pump placement in narrow areas
- Proportional boom control
- The "BFC" Best-Flex Cifa supporting system allowing just one man to change delivery pipeline easily, quickly and safely
- Concrete flow rate regulator
- Safety device on opening inspection hatch
- Project conforms to Directive Machinery 2006/42/CE
- 2 Proportional radio control with two boom movement speed, synthesizer for automatic frequency search, 8 position joy stick and concrete flow rate regulator. 20 mt cable
- Double thickness concrete pipes, in high resistant steel and insert carbide chrome - CIFA Long Life Pipes
- Remote controlled electric vibrator placed on the concrete hopper grid
- Hard plastic outrigger support plates with relative housing
- Rear light on hopper
- Level readers for stabilization control
- Accessories for cleaning and pipes washing
- HP1608EC pumping unit with closed circuit and reversal flow: superb performances, high pressures and output, high reliability and easy and reduced maintenance; 9 inches S valve  
*alternatively:*  
HP907H pumping system with open circuit: smooth, continuous and easy pumping, combined with high reliability
- Medium pressure water pump (50l/50bar)

### Control system

- Smartronic Silver (available only for machine with closed loop pumping unit):
  - integrated color LCD
  - counters
  - pumping unit management
  - diagnostics
  - capsense rear panel

### Main options

- ASC - Advanced Stability Control  
*(available only for machine with closed loop pumping unit)*
- LSC - Light Stability Control  
*(available only for machine with open loop pumping unit)*
- Pneumatic concrete valve - Shut-off valve
- High pressure water pump (28l/120 bar)
- Centralized lubrication system for placing boom
- Separated emergency engine kit for independent control of the concrete pumping unit, boom and water pump

### TRUCK-MOUNTED CONCRETE BOOM PUMP

Placing boom	B4RZ 24/20
Pumping unit	HP907H HP1608EC
Driven by	PTO
Chassis	2 axles HP907H 3 axles HP1608EC

### Pumping unit technical data

Model		HP907H	HP1608EC
Max. theoretical output	<i>m<sup>3</sup>/h</i>	90	160
Max. pressure on concrete	<i>bar</i>	70	80
Conc. cylinders (diam. x stroke)	<i>mm</i>	200x1650	230x2100
Concrete hopper capacity	<i>l</i>	550	550
Hydraulic circuit		open	closed

### Placing boom technical data

Model		B4RZ 24/20
Pipeline diameter	<i>mm</i>	125
Max. vertical reach	<i>m</i>	23,59
Max. horizontal distance	<i>m</i>	19,9
Min. unfolding height	<i>m</i>	4,96
Section numbers		4
1st section opening angle		90°+5°
2nd section opening angle		180°
3rd section opening angle		250°
4th section opening angle		255°
Rotating angle		+/-270°
End hose length	<i>m</i>	4

Technical data and characteristics subject to modifications without notice

