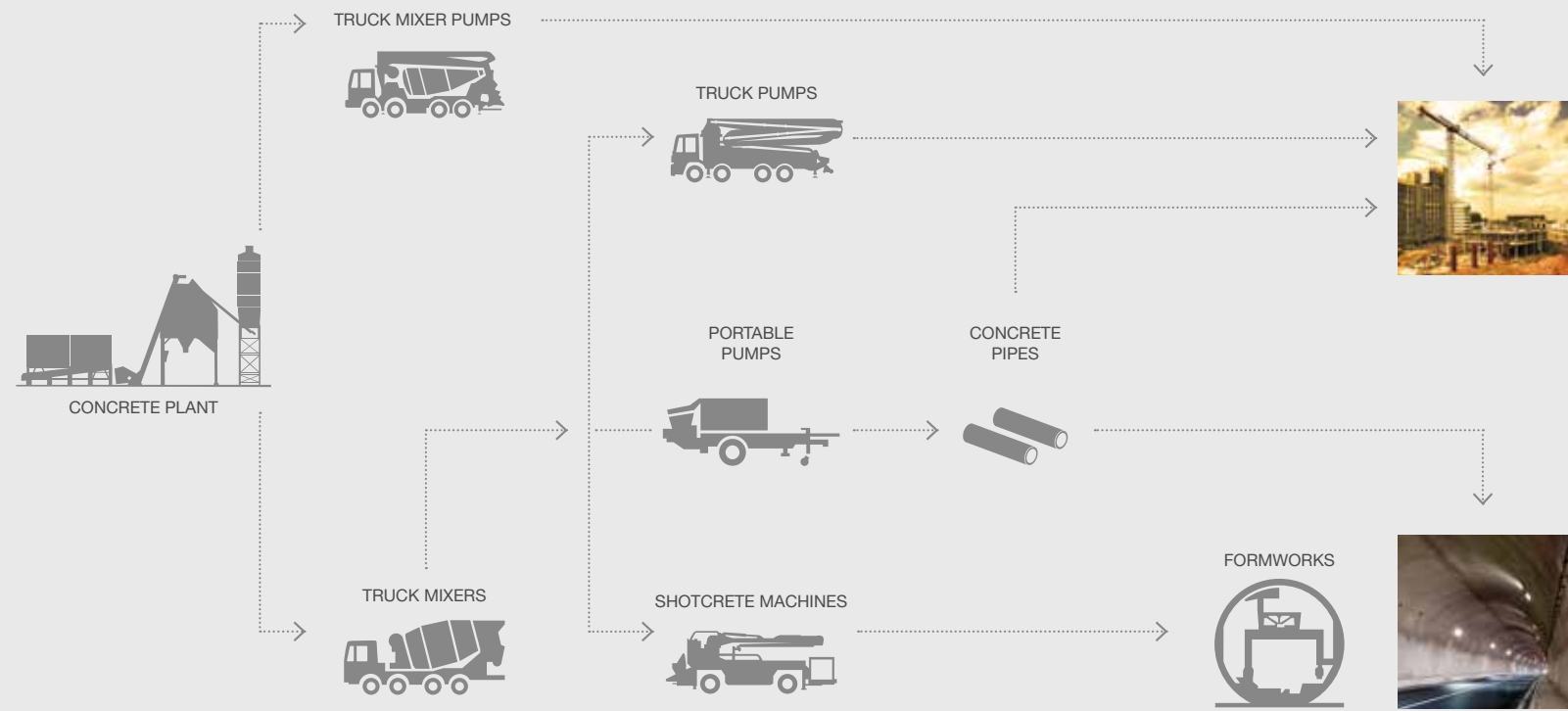


# CONCRETE SUPPLY CHAIN BY CIFA



# PRODUCT RANGE

01-2016



CIFA S.p.A. Via Stati Uniti d'America, 26 - 20030 SENAGO (MI)  
Tel. +39 02 990 131 - sales@cifa.com



The catalogue shows models, outfitting versions and configuration possibilities (standard and optional) of machines for the production, transport and pumping of concrete, manufactured and distributed by CIFA SpA. The catalogue is intended for general information purposes only and the information it contains shall not be deemed a contractually binding document, since CIFA SpA may make constructive and outfitting modifications at any moment and during the period between publication of the catalogue, the production of the equipment and the publication of a more updated catalogue.

# INFINITE SOLUTIONS

**RESEARCH & INNOVATION**

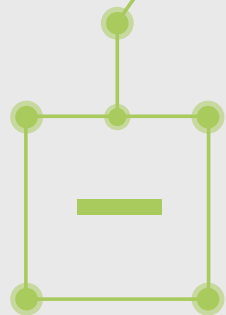


**PROFESSIONAL RANGE**

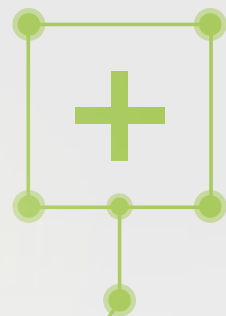
**SERVICE**

**CERTIFIED QUALITY**

# ENERGYA SERIES



LESS CONSUMPTION  
FEWER EMISSIONS



BETTER WORKING  
CONDITIONS  
HEALTHY  
ENVIRONMENT



2 HOURS  
RECHARGING TIME

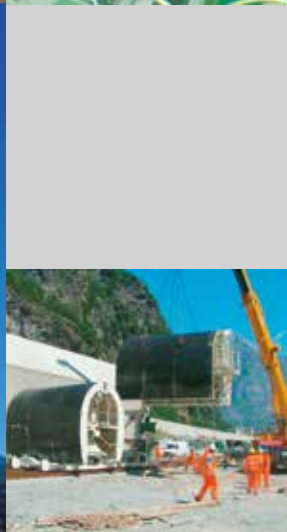


# PLUG-IN HYBRID TECHNOLOGY





FULL



LINE

FE



## TRUCK PUMPS CARBOTECH SERIES



### K39H

BOOM HEIGHT: 38,1 m  
BOOM SECTIONS: 5



### K45H

BOOM HEIGHT: 44,1 m  
BOOM SECTIONS: 5



### K53H

BOOM HEIGHT: 52,1 m  
BOOM SECTIONS: 5



### K60H

BOOM HEIGHT: 59,1 m  
BOOM SECTIONS: 6



### K62H

BOOM HEIGHT: 61,3 m  
BOOM SECTIONS: 6



### K80H

BOOM HEIGHT: 79,5 m  
BOOM SECTIONS: 7

## PLUG-IN HYBRID TECHNOLOGY



### CSSE

THEORETICAL OUTPUT (min - max): 5 - 30 m<sup>3</sup>/h  
MAX PRESSURE ON CONCRETE: 65 bar



### E8-9

NOMINAL CAPACITY: 8 - 9 m<sup>3</sup>

## TRUCK PUMPS STEELTECH SERIES



### K20L

BOOM HEIGHT: 19,75 m  
BOOM SECTIONS: 4



### K30L

BOOM HEIGHT: 29,7 m  
BOOM SECTIONS: 4



### K31L

BOOM HEIGHT: 30,5 m  
BOOM SECTIONS: 5



### K35L

BOOM HEIGHT: 34,4 m  
BOOM SECTIONS: 5



### K36L

BOOM HEIGHT: 35,6 m  
BOOM SECTIONS: 4



### K37L

BOOM HEIGHT: 36,1 m  
BOOM SECTIONS: 5



### K38L

BOOM HEIGHT: 37,6 m  
BOOM SECTIONS: 4



### K42L

BOOM HEIGHT: 41,1 m  
BOOM SECTIONS: 5



### K48

BOOM HEIGHT: 47,2 m  
BOOM SECTIONS: 5



### K52L

BOOM HEIGHT: 51,1 m  
BOOM SECTIONS: 6



### K55L

BOOM HEIGHT: 54,3 m  
BOOM SECTIONS: 5



### K58L

BOOM HEIGHT: 57,1 m  
BOOM SECTIONS: 6

# TRUCK PUMPS CLASSIC SERIES



## K36C

BOOM HEIGHT: 35,5 m  
BOOM SECTIONS: 5



## K38C

BOOM HEIGHT: 37,6 m  
BOOM SECTIONS: 4



## K40C

BOOM HEIGHT: 39,5 m  
BOOM SECTIONS: 5



## K41C

BOOM HEIGHT: 40,1 m  
BOOM SECTIONS: 5



## K49C

BOOM HEIGHT: 48,1 m  
BOOM SECTIONS: 6



## K56C

BOOM HEIGHT: 56 m  
BOOM SECTIONS: 6



# TRUCK MIXERS SL/SLX



## SL/SLA 7-8-9

NOMINAL CAPACITY: 7-8 - 9 m<sup>3</sup>  
with or without auxiliary engine



## SL/SLA 10-12

NOMINAL CAPACITY: 10-12 m<sup>3</sup>  
with or without auxiliary engine



## EXTRA LIGHT SLX 8-9-10

NOMINAL CAPACITY: 8-9-10 m<sup>3</sup>

# TRUCK MIXERS RY/SRY



## RY/SRY 1100

NOMINAL CAPACITY: 10 m<sup>3</sup>  
with or without auxiliary engine - FOR ITALIAN MARKET ONLY



## RY/SRY 1300

NOMINAL CAPACITY: 12 m<sup>3</sup>  
with or without auxiliary engine - FOR ITALIAN MARKET ONLY

# TRUCK MIXERS HEAVY DUTY



## HD/HDA 7

NOMINAL CAPACITY: 7 m<sup>3</sup>  
with or without auxiliary engine



## HD/HDA 8

NOMINAL CAPACITY: 8 m<sup>3</sup>  
with or without auxiliary engine



## HD/HDA 9

NOMINAL CAPACITY: 9 m<sup>3</sup>  
with or without auxiliary engine



## HD/HDA 10

NOMINAL CAPACITY: 10 m<sup>3</sup>  
with or without auxiliary engine



## HD 12+

NOMINAL CAPACITY: 12 (13) m<sup>3</sup>



## HD 15

NOMINAL CAPACITY: 15 m<sup>3</sup>

# TRUCK MIXER PUMPS



## MK 24.4Z

BOOM HEIGHT: 23,5 m  
BOOM SECTIONS: 3



## MK 28L-4''

BOOM HEIGHT: 28,1 m  
BOOM SECTIONS: 4



## MK 28L-5''

BOOM HEIGHT: 28,1 m  
BOOM SECTIONS: 4



## MK 32L

BOOM HEIGHT: 31,2 m  
BOOM SECTIONS: 4



## MK 25H

BOOM HEIGHT: 24,2 m  
BOOM SECTIONS: 4

# CARBOTECH



## PORTABLE PUMPS



### SERIES 6 D/E

MAX THEORETICAL OUTPUT: 30-52 m<sup>3</sup>/h  
MAX PRESSURE ON CONCRETE: 91-57 bar



### SERIES 7-8 D/E

MAX THEORETICAL OUTPUT: 43-87 m<sup>3</sup>/h  
MAX PRESSURE ON CONCRETE: 70-145 bar



### PCC 907/612

THEORETICAL OUTPUT (HIGH/LOW): 56-87 m<sup>3</sup>/h  
PRESSURE ON CONCRETE (HIGH/LOW): 116-73 bar

## CONCRETE RECYCLING



### CIFAWASH 10

OUTPUT (DILUTED CONCRETE): 10 m<sup>3</sup>/h

## CITY PUMP



### CITY PUMP UB 504

THEORETICAL OUTPUT (MIN-MAX): 34-51 m<sup>3</sup>/h  
MAX PRESSURE ON CONCRETE (HIGH/LOW): 62-40 bar

## BATCHING PLANTS



### CIFAMOOVE 30

OUTPUT (VIBRATED CONCRETE): 30 m<sup>3</sup>/h



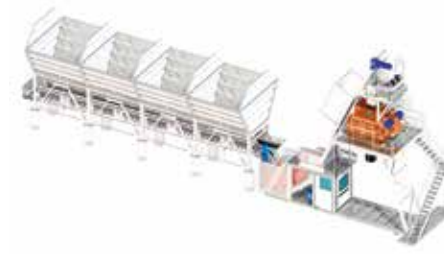
### CIFAMOBILE 50

OUTPUT (VIBRATED CONCRETE): 50 m<sup>3</sup>/h



### CIFAMOOVE 60

OUTPUT (VIBRATED CONCRETE): 60 m<sup>3</sup>/h



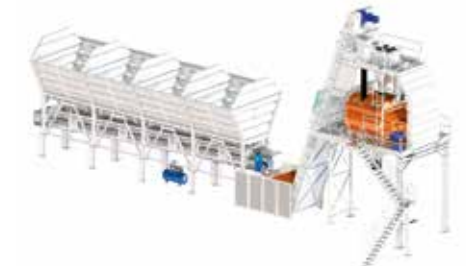
### CIFAMOOVE 75-90

OUTPUT (VIBRATED CONCRETE): 75-90 m<sup>3</sup>/h



### CIFAMOOVE 100

OUTPUT (VIBRATED CONCRETE): 95 m<sup>3</sup>/h



### CIFAMIX 100 - 120

OUTPUT (VIBRATED CONCRETE): 100-120 m<sup>3</sup>/h

## UNDERGROUND CONCRETE MACHINERY

CIFA IS A MEMBER OF:  
EFNARC



### SHOTCRETE CSS3 EVO

THEORETICAL OUTPUT (MIN - MAX): 5 - 30 m<sup>3</sup>/h  
MAX PRESSURE ON CONCRETE: 65 bar



### SHOTCRETE CSS3 CRAWLER

THEORETICAL OUTPUT (MIN - MAX): 3 - 25 m<sup>3</sup>/h  
MAX PRESSURE ON CONCRETE: 50 bar



### SHOTCRETE CST 8.20

THEORETICAL OUTPUT (MIN - MAX): 2 - 20 m<sup>3</sup>/h  
MAX PRESSURE ON CONCRETE: 65 bar



### SHOTCRETE PCS209 D/E

MAX THEORETICAL OUTPUT: 20 m<sup>3</sup>/h  
MAX PRESSURE ON CONCRETE: 90 bar

COGUARO 4



### MINING MIXER COGUARO 4

NOMINAL CAPACITY: 4 m<sup>3</sup>

## FORMWORKS AND SPECIAL EQUIPMENT



### CPC 506 E6 TRAIN PUMP

THEORETICAL OUTPUT 50 m<sup>3</sup>/h  
MAX PRESSURE ON CONCRETE: 57 bar



### SPECIAL EQUIPMENT



### TRAIN MIXER

MC 40 EI: 4 m<sup>3</sup>      MC 80 EI: 8 m<sup>3</sup>  
MC 60 EI: 6 m<sup>3</sup>      MC 100 EI: 10 m<sup>3</sup>



### TUNNEL FORMWORKS

SOLUTION FOR ALL TYPE OF TUNNELS' SECTIONS:  
SELF REACTING, SELF SUPPORTING, TELESCOPIC  
FULL ROUND, NEEDLE BEAMCROSS PASSAGE



### SEGMENT MOULD



### PORT BLOCKS FORMWORKS